

KGFK/GFK

Apt Elev **845'**
 N47 56.8 W097 10.4

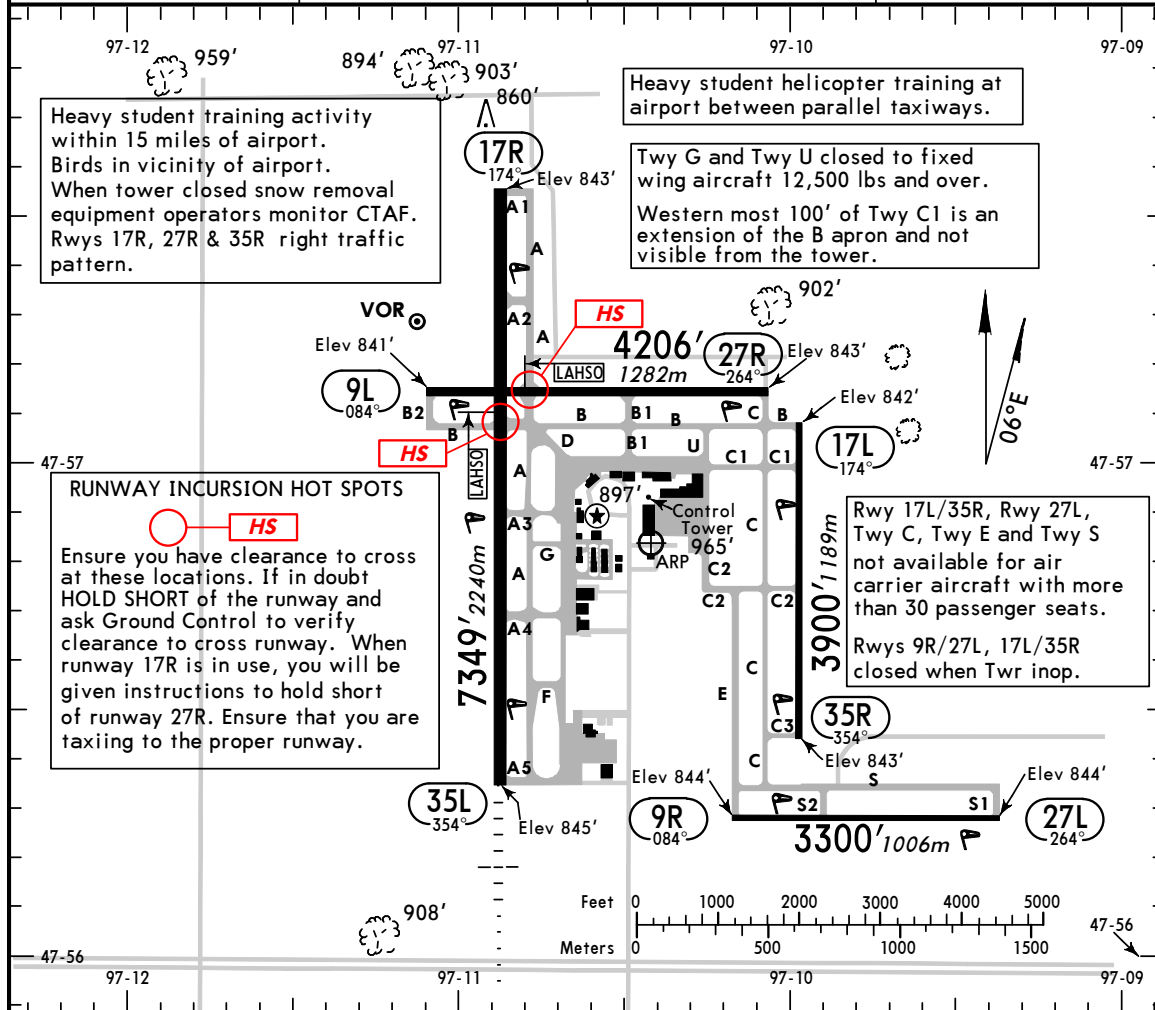


25 DEC 09 **(11-1)**

GRAND FORKS, N DAK

GRAND FORKS INTL

ATIS (ASOS when Twr inop)	*GRAND FORKS Ground	*Tower	GRAND FORKS Departure (R)
119.4	124.57	CTAF 118.4	118.1



Heavy student training activity within 15 miles of airport. Birds in vicinity of airport. When tower closed snow removal equipment operators monitor CTAF. Rwsy 17R, 27R & 35R right traffic pattern.

Heavy student helicopter training at airport between parallel taxiways.

Twy G and Twy U closed to fixed wing aircraft 12,500 lbs and over. Western most 100' of Twy C1 is an extension of the B apron and not visible from the tower.

RUNWAY INCURSION HOT SPOTS
 Ensure you have clearance to cross at these locations. If in doubt HOLD SHORT of the runway and ask Ground Control to verify clearance to cross runway. When runway 17R is in use, you will be given instructions to hold short of runway 27R. Ensure that you are taxiing to the proper runway.

Rwy 17L/35R, Rwy 27L, Twy C, Twy E and Twy S not available for air carrier aircraft with more than 30 passenger seats. Rwsy 9R/27L, 17L/35R closed when Twr inop.

ADDITIONAL RUNWAY INFORMATION

RWY		LANDING BEYOND		USABLE LENGTHS LAHSO Distance	TAKE-OFF	WIDTH
		Threshold	Glide Slope			
9L	① MIRL PAPI-L (angle 3.00°)					100' 30m
27R	① MIRL ② REIL VASI-L			17R/35L 3000' 914m		
9R	③ MIRL PAPI-L (angle 3.00°, TCH 21')					60' 18m
27L	③ MIRL PAPI-L (angle 3.00°, TCH 21')					
17R	① HIRL ② REIL PAPI-L (angle 3.00°)					150' 46m
35L	① HIRL ① MALSR PAPI-L (angle 2.76°)	6060' 1847m		9L/27R 4600' 1402m		
17L	③ MIRL PAPI-L (angle 3.0°, TCH 21')					75' 23m
35R	③ MIRL PAPI-L (angle 3.0°, TCH 22')					

- ① Activate on 118.4 when Twr inop.
- ② Activate on 118.4.
- ③ Preset on low intensity 1930-0200LT.
- ④ Grooved.

TAKE-OFF			FOR FILING AS ALTERNATE		
All Rwsy			Authorized Only When Twr Operating		Authorized Only When Local Weather Available
Adequate Vis Ref		STD	ILS Rwy 35L	LOC (BC) Rwy 17R LOC Rwy 35L	Other
1 & 2 Eng	1/4	1	600-2	800-2	800-2
3 & 4 Eng		1/2			